

EXTRA VIDEOS

1 Watch the video and choose the correct option.

The Ultimate Eyebrow Tutorial With Brow Queen Anastasia Soare

posted by Glamour Magazine UK

- Anastasia of Anastasia Beverly Hills is considered the *Brow Princess / Brow Queen*.
- Anastasia bases her technique for brow shaping on the '*golden ratio*' / '*silver ratio*'.
- Such technique helps to find where the eyebrow should start, finish and arch, to best suit *bone shape and natural brow structure* / *bone structure and natural brow shape*.
- Brows begin directly *above* / *under* the middle of the nostrils.
- The high part of the arch should connect *the tip of the nose with the middle of the iris* / *the middle of the nose with the tip of the iris*.
- Brows should end where the corner of the nostril connects with the *inner* / *outer* corner of the eye.
- When filling in your brows, apply product from *the centre to the tail end* / *the tail end to the centre* first.
- This is because the tail end of your brow should be *darker* / *lighter* than the beginning.
- When creating hair-like strokes at the *bottom* / *top* of the brow, first brush brow hairs down with a spoolie.
- To create extra definition, use a highlighting pencil *above* / *on the corner* of the brow.
- A lot of celebrities are among Anastasia's *clients* / *patients*.
- When you've finished styling, run a tinted brow *gel* / *pomade* over brows to hold the colour and keep eyebrows in place all day.

2 Watch the video and answer the questions.

Eyelash and Eyebrow Tinting - Blink Brow Bar Vancouver

posted by Blink Brow Bar

- What's the client request?
.....
- Do you usually use hair dye for brows and lashes?
.....
- What can hair dye cause?
.....
- How do you choose the colour of the tint?
.....
.....
- Who is brow tinting helpful for?
.....
- When is tinting a good idea?
.....
- How long does tinting last?
.....
- In which case may the colour fade quicker?
.....
- What should you avoid soon after the tinting service?
.....
.....
- Is the client satisfied?
.....

GAMES AND INTERACTIVE ACTIVITIES

1 **PAIR WORK.** Each pair will receive a copy of the eyelashes quiz. In the shortest possible time, choose the correct option and add the letter corresponding to the right 'reason why'.

Reasons why

- a. Don't risk burning the lashes!
- b. The Rimmels founded a cosmetics company in London in the 1800s.
- c. If your mascara is too thick, try a conditioning formula or a defining one. Or just get a fresh tube.
- d. That could make the lashes dry and brittle, and more likely to break.
- e. The top lid has about 200 to 300 hairs, the lower lid has about 100.
- f. To avoid the growth of germs in liquid make-up, you should throw it out three months after you've opened it.
- g. Too much glue can wear out your natural lashes.
- h. The strip must be attached first to the centre of the lash line, next to the outer corner, and then to the inner corner.
- i. There is the anagen phase (active growth period), the catagen phase (transitional period), and the telogen phase (resting period).
- j. They are the tiny hairs which grow on the eyelids.
- k. They keep dirt, sweat, water, and other unwanted debris out of the way.
- l. Two to three coats of mascara are perfect. First, sweep up from the base to the end of the lash. Next, go from the tip of the lash to the base. Then bring the mascara brush across the lashes.
- m. Use a defining mascara first to separate the lashes. Then use a volumising one.
- n. Waterproof mascaras can damage the lashes because they are harder to remove.
- o. You should swirl the brush forward and backward inside the bottle to get more mascara out.

2 **PAIR WORK.** Before and after. Which lash and brow treatments do you think these clients have had?



1.



3.



5.



2.



4.



6.

REAL-LIFE ACTIVITIES

1 **CLASS WORK.** In groups, decide which is the right style of false lashes to make these eye shapes look better.



1.



4.



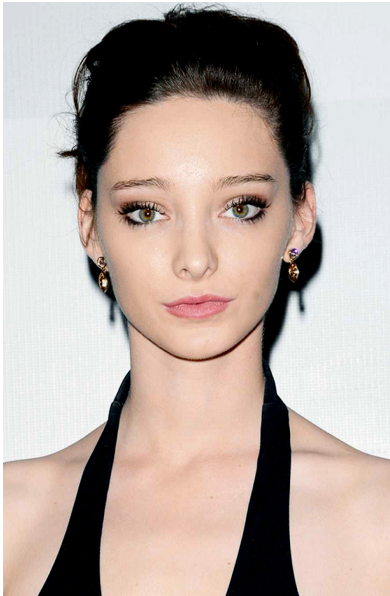
6.



2.



5.



7.



3.

- a. If a layer of skin droops over the crease, making your upper eyelid look smaller, and you want to open up your eyes as much as possible and to create the illusion of depth, choose curly lashes which are slightly longer in the centre of the strip. Avoid heavy, voluminous lashes that make your eye look smaller and flatter.
- b. If the crease of your eye is visible and your eyes are circular, choose winged and light lashes slightly longer towards the outside wing, which will help create a seductive cat-eye shape.
- c. If the distance between your eyes is less than the length of one of your eyes, choose lashes that are shaped to be longest on the outer corner of your eye or add individual lashes to the outer corner of the eye.



- d. If the distance between your eyes is more than the length of one of your eyes, choose lashes that are longer and fuller in the inner corners of the eye.
- e. If you do not have any crease on your eyelid, choose slightly curved crisscrossed false eyelashes with layered lengths that naturally open up and give more height to the eyes.
- f. If your eyes are oval-shaped like almonds, for a naturally voluminous effect choose lashes that are evenly distributed all the way along the band or crisscrossed on the strip. You can also wear individual eyelash extensions applied at the furthest outer corner of your eyes.
- g. If your eyes are deep set and your upper eyelid appears short and small with a visible crease, to open up your eyes and enhance their size, choose long, curled lashes that turn up and outward.

2  **Show your clients the sketch of the eyebrows you would suggest to suit their face and describe their shape.**

1. I would like a brow shape which is perfect for my oval face.
2. I would like a brow shape which makes my long face appear shorter.
3. I would like a brow shape which makes my face appear less round.
4. I would like a brow shape which softens my strong jawline.
5. I would like a brow shape which balances my pointy chin.
6. I would like a brow shape which makes the widest portion of my face appear less large.



1. Oval



2. Long



3. Round



4. Square



5. Heart



6. Diamond

